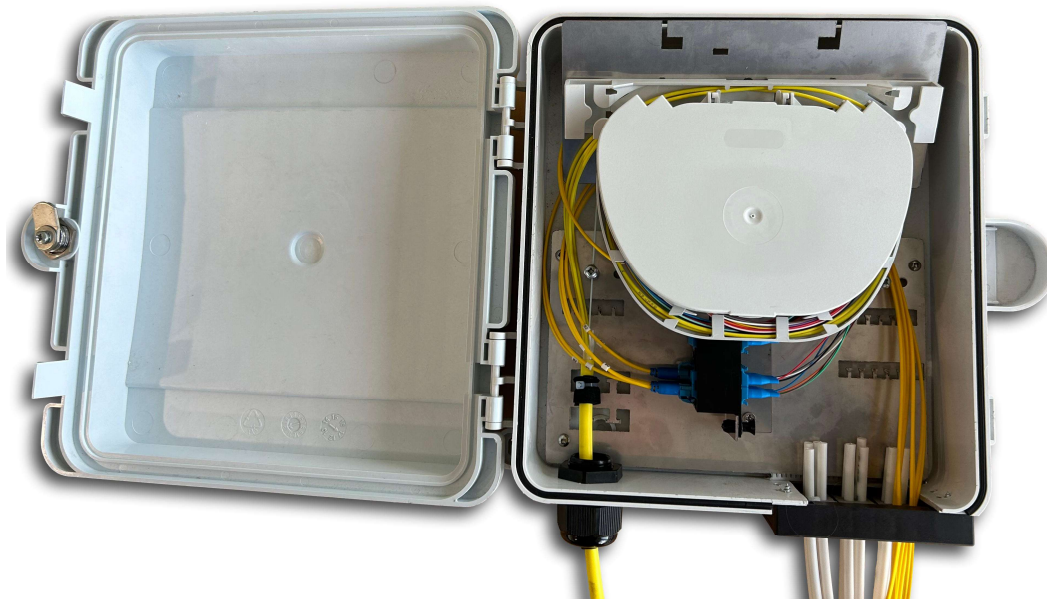


24 Fibre splice/patch termination Box



24 Fiber Splice/Termination Box

The Termination Box (TB) has been developed for joining one or two cables, or pre-terminated patch-cables to a termination panel with 24 Adapters or a splice Box for up to 192F. Suitable for indoor and outdoor environments.

Features

Can be easily wall mounted. If requested, it can be equipped with an installation kit for pole mounting installation. The lid can be unfastened to facilitate first installation activities. The two input cables can be installed after the first installation.

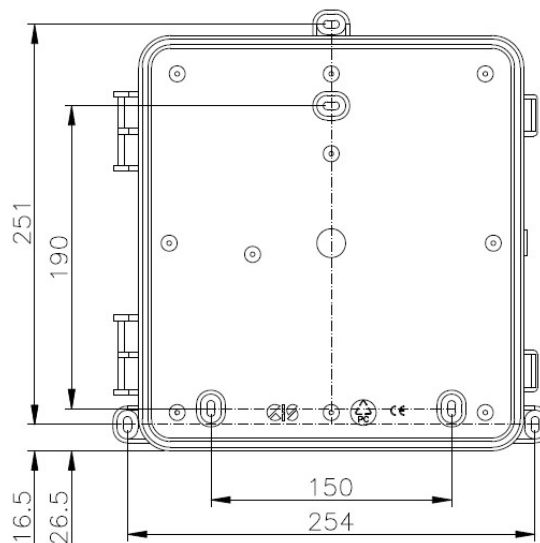
Additional accessories

- 12 compact SC,SE,DD or SLE 2,4 and 8 splice tray modules-ordered separately.
- HD 24F adapter plates (SC, FC, ST, LC and E2000 type) ordered separately.
- HD adapter plate fixation bracket (SC, FC, ST, LC type) -ordered separately.
- Back mount fixation bracket for pole mounting -ordered separately.
- 2 input cables with loop through capability-Seal ordered separately.
- fixing of VTR or Kevlar of the input cables.
- protection gasket and frame for IP55 for up to 24 individual drop cables.(upon request).

Materials

- polycarbonate - base and cover - RAL 7035 - UV - UL 94VO
- stainless steel - bottom plate
- blends - trays - UV - UL 94VO
- protection degree IP55
- mechanical protection degree IK8
- dimensions: 270 x 250 x 90 (W x H x D)

Back mount Dimensions



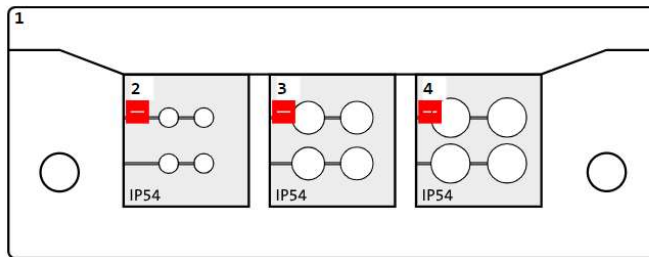
Configuration options:

- Pre-terminated tails up to 24F (LC).
- Splice/Patch up to 24F (LC)
- Splice/Splice up to 192F(2x 8SLE modules).

Box Ordering information:

PN WC-WB-SP-PAT-24 WC-CIS-HD-BASE	Description Wall Box splice 192F patch 24F. HD 1.2MM SS FOLDED PATCH PANEL
---	--

Seal. Ordering information



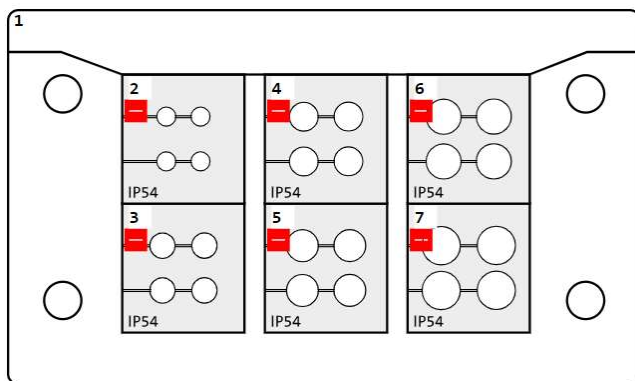
Frame type

KEL-QUICK-E3



Configured grommets

Pos.	Part No.	Type
1	42422	KEL-QUICK-E3
2	42580	QT 4 3
3	42584	QT 4 5
4	42586	QT 4 6



Frame type

KEL-QUICK 10|6



Configured grommets

Pos.	Part No.	Type
1	42420	KEL-QUICK 10 6
2	42580	QT 4 3
3	42582	QT 4 4
4	42583	QT 4 4.5
5	42584	QT 4 5
6	42585	QT 4 5.5
7	42586	QT 4 6



Splice trays for OSP closures and Customer boxes



Picture	Description	PN
	2 trays SE module - 12 Heat Shrink Splices per tray	WC-1380075
	4 trays SE module - 12 Heat Shrink Splices per tray (SLIM version)	WC-1380082
	5 trays SE module - 12 Heat Shrink Splices per tray	WC-1380005/12
	8 trays SE module - 12 Heat Shrink Splices per tray (SLIM version)	WC-1380083
	4 trays SC module - 4 Heat Shrink Splices per tray	WC-1380011
	8 trays SC module - 4 Heat Shrink Splices per tray	WC-1380011/8
	Holder for 3 Splitter 4x4x40 + 6 Heat Shrink Splices for tray (or, 4 Splitter 4x4x40 + 4 Heat Shrink Splices for tray)	WC-1703087
	4 trays SC DD module - 4+4 Heat Shrink Splices per tray	WC-1380081
	8 trays SC DD module - 4+4 Heat Shrink Splices per tray	WC-1380080
	Cover for Single Element trays	WC-1703051
	Cover for Single Element SLIM trays	WC-1703097
	Cover for Single Circuit trays	WC-1703047
	Cover for Single Circuit DD trays	WC-1703094

